



# **Maryland Department of Health COVID-19 Briefing General Assembly Caucuses & Federal Delegation**

**Robert R. Neall, Secretary**

**Frances B. Phillips, Deputy Secretary, Public Health Services**

**March 10, 2020**

# Basic Facts

---

❖ **Current information:**

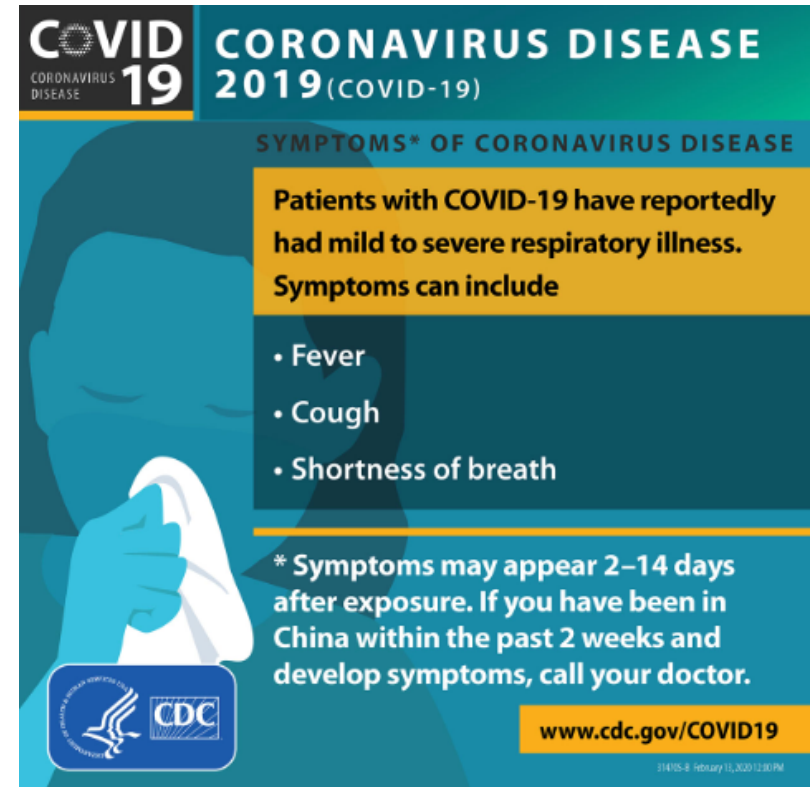
<http://health.maryland.gov/coronavirus>

❖ *Coronaviruses* are a family of viruses that cause disease in animals and humans including the common cold, severe acute respiratory syndrome (SARS), and Middle East Respiratory Syndrome (MERS)

❖ COVID-19 is the official name for the new or novel coronavirus of late 2019

# Transmission and Symptoms

- ❖ Spreads person-to-person, primarily through respiratory droplets (cough, sneeze)
- ❖ Can be picked up from surfaces
- ❖ Incubation period: 2 – 14 days, 5 days on average
- ❖ Symptoms:
  - Fever >100.4F, cough, shortness of breath



# Prepare, Prevent, Treat

---

- ❖ Household preparation for an extended period at home
- ❖ Personal prevention
  - Frequent handwashing
  - Cover coughs and sneezes
  - Stay home if sick
  - No vaccine at present
- ❖ No specific medical treatment

# Maryland: COVID-19 Cases

---

- ❖ Number of negative COVID-19 tests: 89
- ❖ Number of laboratory-confirmed COVID-19 cases: 6

*(Updated as of 7 AM, March 10, 2020) – latest results posted here:*  
<http://health.maryland.gov/coronavirus>

# MDH Response Efforts

---

- ❖ Laboratory Testing
- ❖ Surveillance
- ❖ Medical guidance to clinicians
- ❖ Monitoring returned travels
- ❖ Preparedness planning with multiple partners
- ❖ Broad Public Information

# Federal, State and Local Partners

---

- ❖ Daily briefing and coordination calls with the CDC
- ❖ Daily briefing calls across all state and local agencies
- ❖ Weekly webinars with local health departments, emergency management officials, EMS, hospitals, and other healthcare facilities
- ❖ Frequent calls with neighboring state health officials
- ❖ Briefings for other stakeholders

# Hospitals, Providers, Health Care Facilities (ex. Nursing Homes)

---

- ❖ Surveillance
- ❖ Inventorying resources/supplies
- ❖ Infection control
- ❖ Medical management
- ❖ Surge planning
- ❖ Continuity of Operations Plan(s) (COOP)



# Schools, Colleges, Universities

---

- ❖ School closure decisions are being made on a case by case basis.
  
- ❖ Coordinating guidance with the State Department of Education.
  - emergency operations plans
  - establishing procedures for isolation of staff or students who become sick at school
  - communicating policies and procedures for picking up a sick child to parents
  - addressing dismissal/school closures policy and procedures
  - monitoring absenteeism
  
- ❖ Coordinating with Colleges and Universities

# Department of Aging

---

- ❖ The Area Agencies on Aging are working closely with their local Departments of Health.
- ❖ The Maryland Department of Aging is providing guidance to the public (through Maryland Department of Health's communications office) specific to older adults.
- ❖ Developing a “caregivers corp” to ensure seniors receive care even if a caregiver is sick.